



£995 Monthly

Winchester Road, Shirley, Southampton, SO16 6TS

| 1 Bedroom | 1 Bathroom

0333 577 0118



www.everystepoftheway.net



Step Inside

Key Features

- First floor one-bedroom apartment
- Situated close to the General Hospital
- Beautifully presented
- Spacious open-plan lounge and kitchen with breakfast bar
- Generously sized double bedroom and a modern bathroom
- Communal gardens and off road parking
- M27 and M3 motorway links are within a short drive
- Mainline railway stations at Southampton Central and Southampton Parkway are within a short drive
- Available end of September - Available long term
- Pets considered - Deposit amount required - 5 weeks - £1,067.30

Main Particulars

A great opportunity to acquire this first floor one-bedroom apartment. Situated close to the General Hospital and excellently place for main road, motorway and rail connections. The apartment has been beautifully presented and offers a spacious open-plan lounge and kitchen with breakfast bar. There is a generously sized double bedroom and a modern bathroom. Outside there are communal gardens and off-road parking.

Photo 4



Photo 3



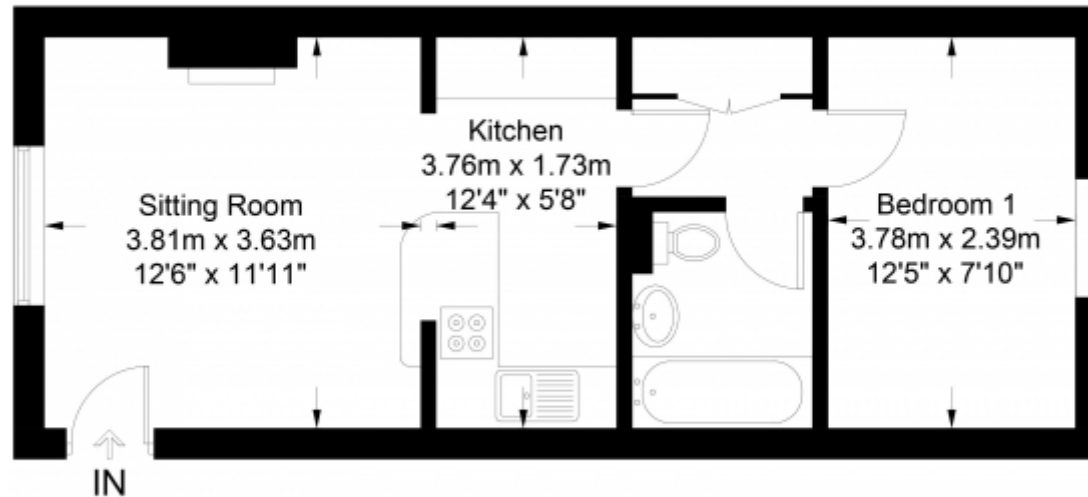
Photo 2



Photo 1



APPROXIMATE GROSS INTERNAL AREA = 38.1 SQ M / 410 SQ FT



THESE PLANS ARE FOR REPRESENTATION PURPOSES ONLY AS DEFINED BY RICS - CODE OF MEASURING PRACTICE. NOT TO SCALE.
CREATED BY EMZO MARKETING (ID547004)
PRODUCED FOR HAMILTON PARKERS

This floorplan is for illustrative purposes only and the location of doors, windows and other items are approximate.

Agents notes: All measurements are approximate and for general guidance only and whilst every attempt has been made to ensure accuracy, they must not be relied on. The fixtures, fittings and appliances referred to have not been tested and therefore no guarantee can be given that they are in working order. Internal photographs are reproduced for general information and it must not be inferred that any item shown is included with the property. Copyright © 2024 12158818 Registered Office: Stockbridge Registered address: 120 Bournemouth Road, Chandlers Ford, SO52 2AU

Telephone: 0333 577 0118



www.everystepoftheway.net