

EVERY
STEP OF
THE WAY

PROPERTY GROUP

New Build

Nursling

Contact Us

www.everystepoftheway.net
info@everystepoftheway.net
0333 577 0118





Every Step of The Way property group are delighted to bring to the market this newly constructed three bedroom chalet style property, designed beautifully throughout, offering attention to detail and modern fittings. Situated in a highly sought after location on the edge of Romsey and Southampton, ideally situated for the commuter and for schooling.

Entering into the property you are greeted by an open plan kitchen/living room, with modern fitted kitchen. The ground floor accommodation also offers two bedrooms and a main bathroom. The second floor benefits from a further bedroom with ensuite bathroom.



General information:

Romsey 3.5 miles * Southampton town centre 5.8 miles * Southampton Airport 6.4 miles * Eastleigh 8.8 miles * Winchester 14.4 miles * Salisbury 19.7 miles.

EPC: TBC

Local Council: Hampshire County Council



EVERY
STEP OF
THE WAY

PROPERTY GROUP



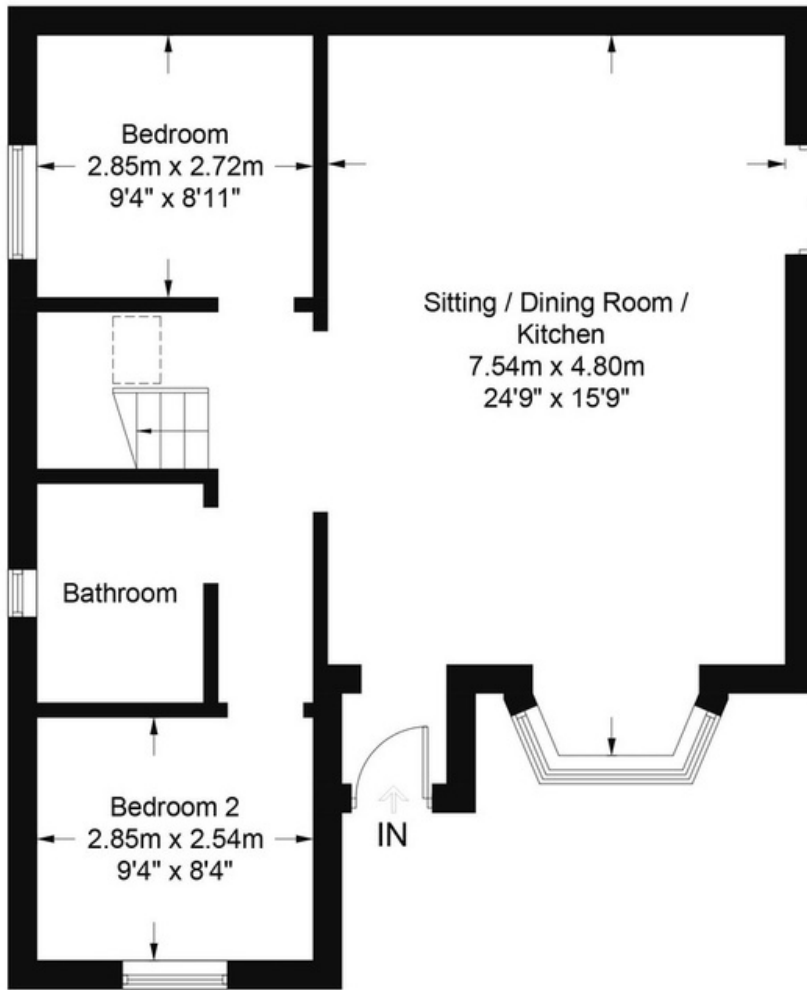
Situation:

Rownhams sits on the edge of Romsey and Southampton with easy access to the M27, central Southampton and Southampton Airport. The local village offers a good range of local shops and the Nursling Primary School is within easy walking distance.

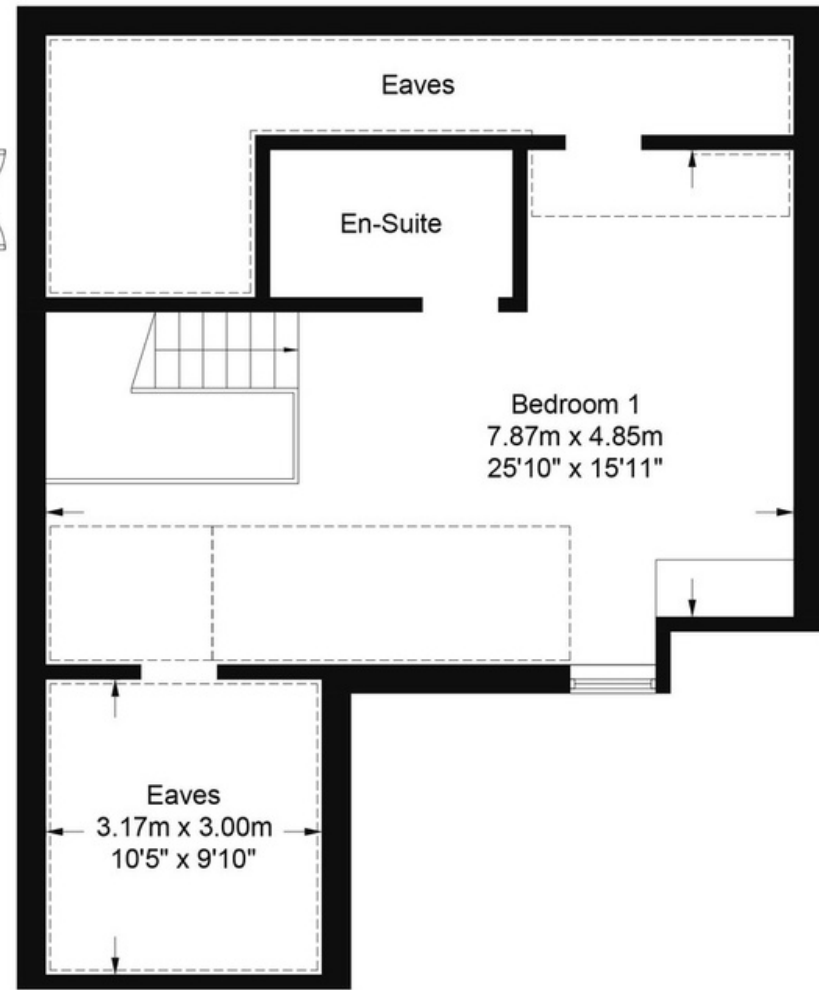
APPROXIMATE GROSS INTERNAL AREA = 124.8 SQ M / 1343 SQ FT
(INCLUDING EAVES)



= Reduced headroom below 1.5m / 5'0



GROUND FLOOR



FIRST FLOOR

THESE PLANS ARE FOR REPRESENTATION PURPOSES ONLY AS DEFINED BY RICS - CODE OF MEASURING PRACTICE. NOT TO SCALE.
CREATED BY EMZO MARKETING (ID801280)
PRODUCED FOR HAMILTON PARKERS

